

ADCA Hip Height Study

Consent and Release of Information Form

I understand that this evaluation is being conducted by the ADCA Classification Committee at the direction ADCA Board of Directors for the purpose of providing the ADCA Board and ADCA Members with a better understanding of the range and frequency of hip heights in the dexter herd in the in United States.

I understand that choosing not to participate in this study will in no way affect my relationship with the ADCA, nor will choosing not to participate result in the loss of any membership rights or benefits which I am otherwise eligible to receive. I understand that my participation in this study is completely voluntary.

I understand that participation in this study will involve the measurement of my cattle following the procedures outlined in the enclosed “Data Collection and Reporting Instructions”, accurately recording those measurements and reporting this information along with basic data on each animal measured to the ADCA Hip Height Study representative of the ADCA Classification Committee.

I understand that all the information I provide for this study will be treated as confidential and that no person outside the member/s of the ADCA Classification Committee receiving the data for collection and data entry will see the individual identifying data. Owner, herd and animal identification will be removed from the dataset for the purpose of analyses and all reports generated from the data will contain no individual owner, herd or animal identification.

I agree to participate in the ADCA Hip Height Study.

Signature

Date

If you have questions about participating in this study or would like more information please contact:

Patti Adams, 7393 E. 109th ST, Overbrook, KS 66524, (785) 836-3065, pvwcadams@aol.com

ADCA Hip Height Study Data Collection and Reporting Instructions

Data Collection Form:

Attached are data collection forms for the recording of data on each animal. If additional forms are needed please make copies or use the back of one of the sheets provided. As with the ADCA Classification Procedures – only animals two years of age or older should be measured.

At the top of the first form and each additional page used please record the date or month when your measurements were taken in the date field and your herd name in the fields provided.

ID Code: Please do not put anything in this field, a unique code will be assigned when the data is submitted.

ADCA Region: indicate what your ADCA Region is.

ADCA Reg. #: write the ADCA registration number for each animal measured.

Reg. Animal Name: write the animal's full registered name.

DOB: animal's date of birth (month / day / year).

Sex: identify animal as male or female (M/F) - if steer, please note in comment field

HN/HC: identify animal as HN - Homozygous Normal (long leg) or HC - Heterozygous Carrier (short leg). If you do not know status of animal, mark this field DK (Don't Know).

Test/Oblig/Obs: identify how HN/HC status was noted – Tested, Obligate (HN only, if out of DNA-tested HN sire and dam), or by Observation.

Hip Height M1: First measurement of hip height, inches (*Measurement procedure – below*)

Hip Height M2: Second measurement of hip height, inches.

Comment: In this field put any information related to the animal or the measurement that you feel relevant.

How to Measure Hip Height:

Hip height measurements should be collected through the use of height measuring sticks (see Figure 2). The height sticks are constructed with a sliding arm containing a bubble level on a pole scaled in height increments. The height sticks should be incremented in 0.25-inch increments.

To make a measurement, the pole is held vertically alongside the animal's hip with the sliding arm positioned level and directly over the hook bones and a measurement read from the pole where the arm attaches (see Figure 3).

For accurate height measurements it is necessary for the animal to be on a relatively flat surface, to have its legs set squarely, and head in a normal position.



Figure 2. Height Measuring Stick

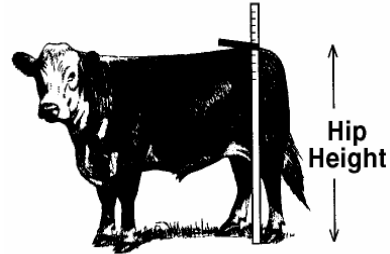


Figure 3. Placement for Measurement

ADCA Hip Height Measurement Procedure:

Once the basic animal data is recorded on the data form and you are ready to measure your animals please follow these procedures. *An additional sheet of paper for note taking will be needed to record measurements prior to placing on data form.*

- 1) Take first measurement of animal following hip height measurement instructions above.
- 2) Note this measurement on the extra sheet of paper.
- 3) Take a second measurement of animal and note this measurement by the first.
- 4) If the two measurements are not within 0.5 (1/2 inch) of each other, line out these two measurements and return to step one.
 - Example 1. 1st measure 43.5, 2nd measure 44 – this measure is acceptable
 - Example 2. 1st measure 43.5, 2nd measure 44.25 – this measure is not acceptableRepeat steps 1 through 4 until the two measurements taken are within 0.5-inch.
- 5) Once the two consecutive measures are within the 0.5-inch range – mark these two measures into the data form.
- 6) Measure your next animal using the same procedure.
- 7) Once you have completed all the animals you are measuring, check to make sure you have filled in all the fields for each animal and the data is correct.
- 8) Return the Consent and Release of Information Form and the Data Form to:
Patti Adams, 7393 E. 109th ST, Overbrook, KS 66524

Suggestions:

The procedures to be followed and the measurement process itself are much easier to conduct with at least two persons. One can read the bubble level and the other mark the height on the stick. Ideally, the height measurement is conducted by two people, each measuring the animal and coming to within 0.5-inches of each other, but this is not required.

A semi-tight hair band or string on the sliding height stick is also sometimes useful, particularly when only one person is available. Place this band above the expected height of the animal and then drop the sliding arm down until the bubble reads level. As the arm drops the band is pushed along the arm (be sure the band used will not move into the arm tube) and when level on hooks remove the stick and the band will have the height - this can aid in the process of determining where the sliding arm stopped.